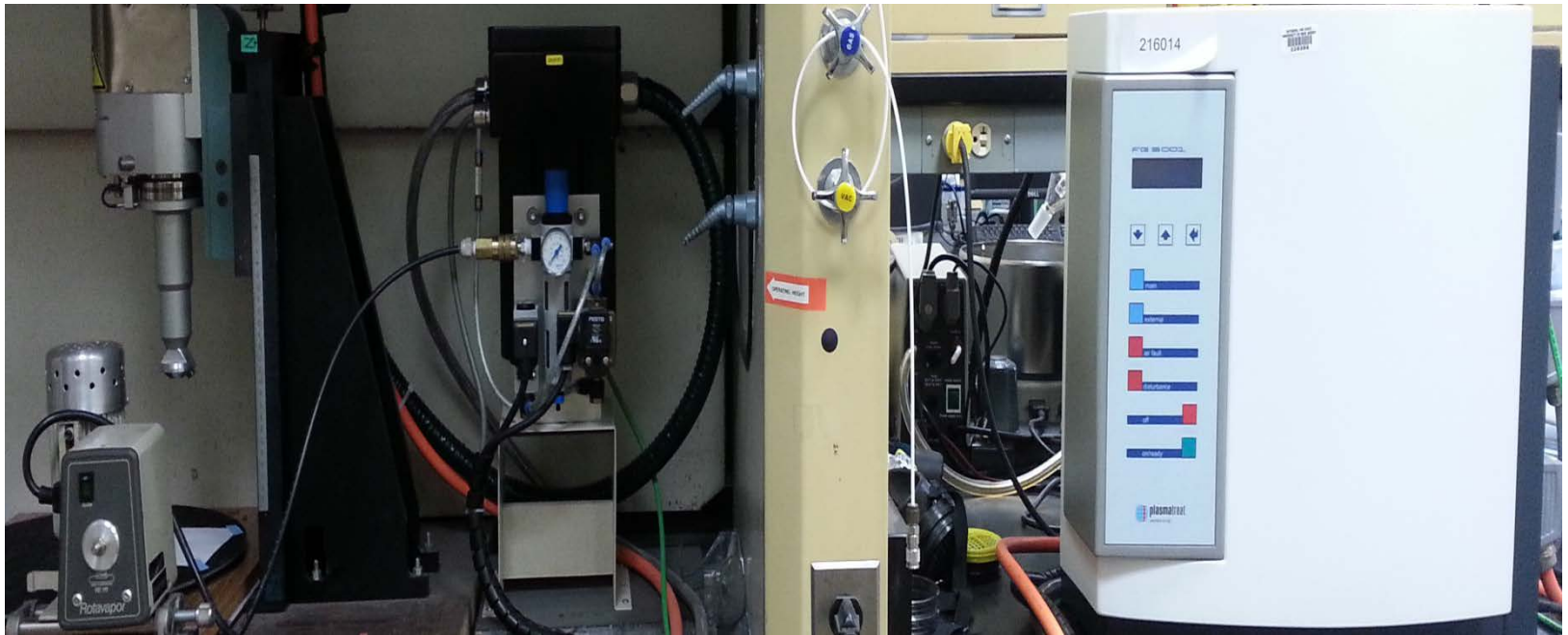


Rutgers Plasma Processing Facility

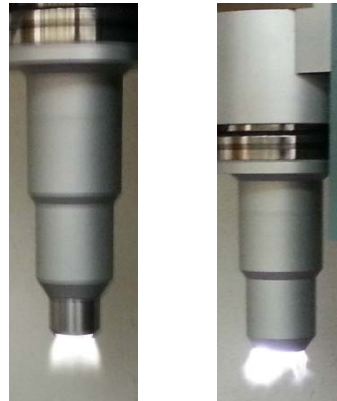
Cold/Warm Atmospheric Pressure Plasma Equipment



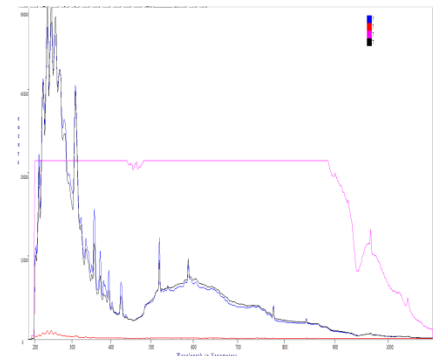
Nozzles



Plasma Jets



Optical Emission Spectroscopy



Rutgers Plasma Processing Facility

Equipment Specifications :

1. Voltage : 250 V to 300 V
2. Frequency : 19 kHz to 23 kHz
3. Air Pressure : 0 to 2000 mBar
4. Plasma Cycle Time : 1% to 100%

Key Features :

1. Ease of operation
2. Plasma generation from different gases possible (He, N₂, and Air)
3. Treatment times can be varied
4. Plasma distance can be adjusted
5. Reactive species measurement (relative) using Optical Emission Spectroscopy

Uses :

1. Surface Tension modification
2. Surface microbial inactivation for foods and packaging materials
3. Medical applications
4. Equipment sterilization

Contact :

Dr. Mukund V. Karwe

Professor

Department of Food Science

65 Dudley Road ,New Brunswick, NJ 08901

Tel: 848-932-5487

Email: karwe@aesop.rutgers.edu